



**REGIONAL SPECIALISED METEOROLOGICAL CENTRE-TROPICAL CYCLONES, NEW DELHI
TROPICAL WEATHER OUTLOOK**

DEMS-RSMC TROPICAL CYCLONES NEW DELHI DATED 16.09.2021

TROPICAL WEATHER OUTLOOK FOR NORTH INDIAN OCEAN (THE BAY OF BENGAL OF BENGAL OF BENGAL AND ARABIAN SEA) VALID FOR NEXT 120 HOURS ISSUED AT 0600 UTC OF 16.09.2021 BASED ON 0300 UTC OF 16.09.2021.

BAY OF BENGAL:

YESTERDAY'S WELL MARKED LOW PRESSURE AREA (WML) OVER NORTHEAST MADHYA PRADESH LAY OVER NORTH MADHYA PRADESH & NEIGHBOURHOOD AT 0300 UTC OF TODAY, THE 16TH SEPTEMBER 2021. IT IS VERY LIKELY TO WEAKEN GRADUALLY DURING NEXT 48 HOURS.

AS PER INSAT 3D IMAGERY, ASSOCIATED SCATTERED TO BROKEN LOW AND MEDIUM CLOUDS WITH EMBEDDED MODERATE TO INTENSE CONVECTION LAY OVER UTTAR PRADESH & EAST MADHYA PRADESH IN ASSOCIATION WITH THE WML. SCATTERED TO BROKEN LOW AND MEDIUM CLOUDS WITH EMBEDDED INTENSE TO VERY INTENSE CONVECTION LAY OVER NORTH ADJOINING EASTCENTRAL BAY OF BENGAL & SOUTHEAST BAY OF BENGAL. SCATTERED LOW AND MEDIUM CLOUDS WITH EMBEDDED MODERATE TO INTENSE CONVECTION LAY OVER SOUTHWEST BAY OF BENGAL, SOUTH ANDAMAN SEA GULF OF MARTABAN AND WEAK TO MODERATE CONVECTION OVER WESTCENTRAL BAY OF BENGAL & NORTH ANDAMAN SEA.

PROBABILITY OF CYCLOGENESIS (FORMATION OF DEPRESSION) DURING NEXT 120 HRS:

24 HOURS	24-48 HOURS	48-72 HOURS	72-96 HOURS	96-120 HOURS
NIL	NIL	NIL	NIL	NIL

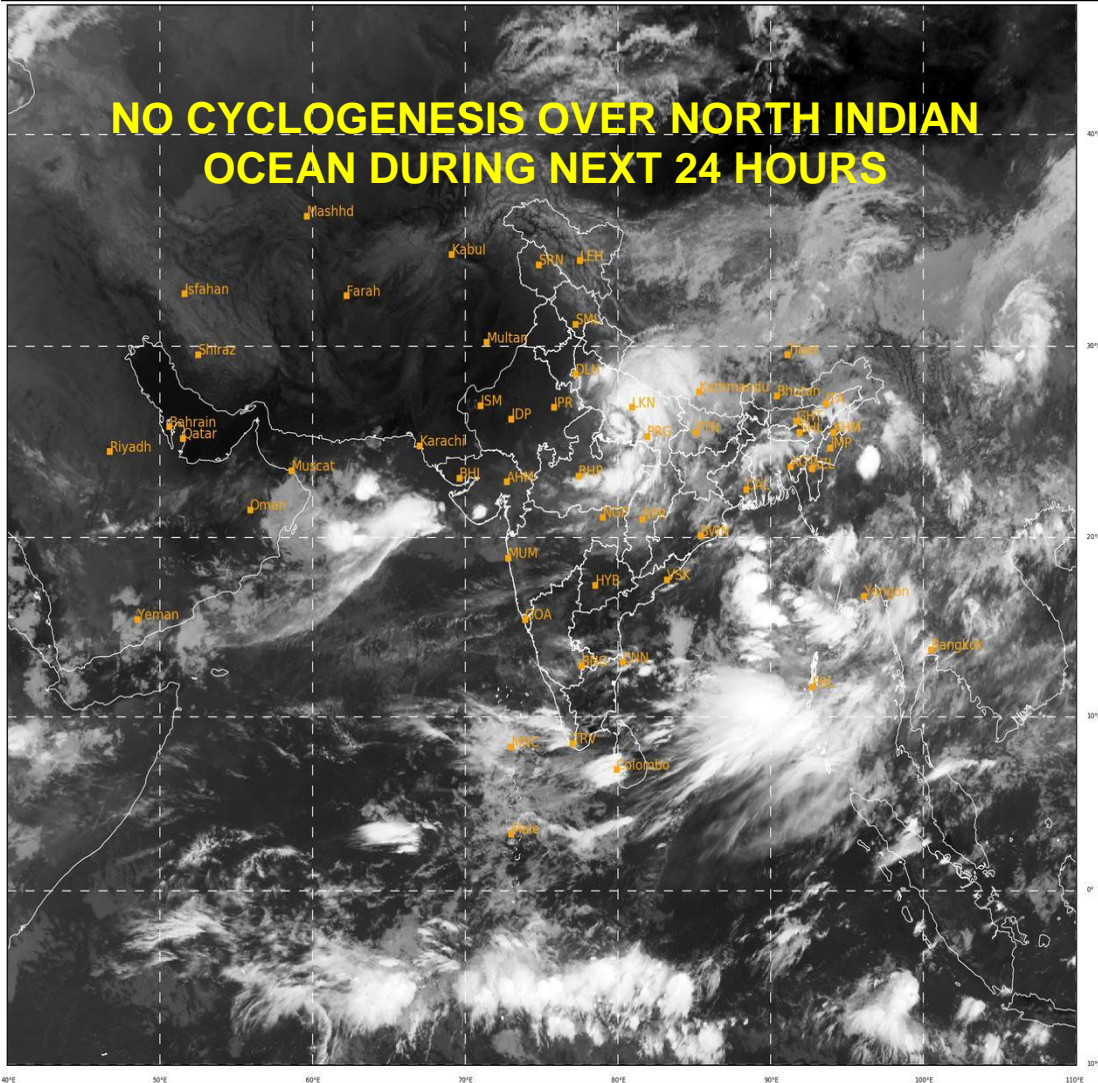
ARABIAN SEA:

SCATTERED LOW AND MEDIUM CLOUDS WITH EMBEDDED INTENSE TO VERY INTENSE CONVECTION OVER NORTH ARABIAN SEA ADJOINING CENTRAL PARTS OF CENTRAL ARABIAN SEA. SCATTERED LOW AND MEDIUM CLOUDS WITH EMBEDDED MODERATE TO INTENSE CONVECTION LAY OVER SOUTHEAST ARABIAN SEA & COMORIN REGION AND WEAK TO MODERATE CONVECTION LAY OVER WESTCENTRAL ARABIAN SEA.

PROBABILITY OF CYCLOGENESIS (FORMATION OF DEPRESSION) DURING NEXT 120 HRS:

24 HOURS	24-48 HOURS	48-72 HOURS	72-96 HOURS	96-120 HOURS
NIL	NIL	NIL	NIL	NIL

REMARKS: NIL



433

931

IMD, DELHI